



© EMIL BLAU, Martin Geyer

VeroStone

Your partner for inspired solutions in natural stone – all around the globe.

Natural Stone

elemental, aesthetic, distinctive

VeroStone – the natural stone specialist with over a century of experience and expertise offers an expanded product portfolio: Jura Limestone, Shell Limestone and Sandstone.

The forces of nature have formed Jura Limestone, Shell Limestone and Solnhofen Natural Stone in Southern Germany over millions of years. The Roman Empire used these valuable stones to build their forts and living quarters. Today the same stone from Bavaria is in demand all over the world – for private buildings, for corporate facades and floors, sculptures and in gardens and landscaping.

The natural stones are extracted in VeroStone’s own quarries and processed down to the last detail in modern production facilities. Efficient logistics combined with motivated and experienced specialists are the foundation for worldwide success. Our global network of representatives remain on hand to assist international projects with focus on the clients’ requirements.



Gerling Quartier, Cologne Al Hamra Tower, Kuwait



Shell Limestone quarry, Kirchheim

Täby Centrum, Täby/Stockholm



The VeroStone edge

- Years of experience and individual consultation at the highest level
- Modern production facilities, our own quarries and efficient logistics
- Responsible production in accord with the highest environmental and social requirements in Germany
- International project realization through our worldwide network of representatives



Jura Limestone quarry, Petersbuch

Milestones	Shell Limestone, consisting of shell and skeletal deposits in the primal Franconian Sea – hardening to form a sedimentary rock.	140 million years ago	Neumeyer & Brigl The first quarry owners on the Blumenberg discover the famous Archaeopteryx.	VeroStone unites the two long-established companies Neumeyer & Brigl and HEMM.STONE
	240 million years ago	Jura Limestone, layers of sea bed originating from the lagoons of the shallow sea of the Upper Jurassic period. Lime, plants and animal deposits solidify forming Jura Limestone with its famous fossils.	from 160 A.D. Jura quarystone is used for towers and forts of the Roman Limes.	1877
			1882	HEMM.STONE The stone mason Carl Schilling establishes the Shell Limestone industry in Kirchheim.
				2015

Jura Limestone

durable, unique, timeless

Jura Limestone, with its inviting and warm tones, is one of the world's most sought after limestones. Its wide array of choices in colour and texture and its versatile, low-maintenance surfaces are unique.

Quarried in the Eichstaett and Petersbuch-Erkertshofen region, the subtle colours of Jura Limestone hold a timeless beauty. The colour shades, ranging from light beige to blue, and superb fossilized deposits of ancient ammonites make each piece one of a kind.

Its durability allows Jura Limestone to be used as flooring in the most demanding areas such as shopping

malls and airports. The hardness and density of this special stone will allow it to be polished to a mirror finish. The excellent technical properties have led Jura Limestone to being used, internally and externally, vertically and horizontally, in a variety of climates around the world. The same qualities make the stone perfect for under floor heating systems.

One geological characteristic of Jura Limestone is its vast reservoirs with consistent quality, meaning the largest scale projects can be realized. This gift of nature is a symbol of timelessness and durability.

Material



Villa Vienna, Vienna

Technical Data according to DIN EN	VeroStone® Jura Gold	VeroStone® Jura Beige	VeroStone® Jura Cream	VeroStone® Jura Travertin	VeroStone® Jura Melange Jura Blue
water absorption	1,4 M.-%	2,4 M.-%	1,4 M.-%	2,5 M.-%	1,0 M.-%
density	2630 kg/m³	2510 kg/m³	2590 kg/m³	2520 kg/m³	2650 kg/m³
flexural strength	10,6 Mpa	14,7 Mpa	11,6 Mpa	14,0 Mpa	14,7 Mpa
modulus of rupture	1560 N	1495 N	1400 N	819 N	1495 N
frost resistance	resistant	resistant	resistant	resistant	
abrasion index	17,8	22	19,4	20,2	17,7

detailed technical data can be found on the internet: www.verostone.de



Kasarmikatu 21, Helsinki

Surfaces



Overhoeks, Amsterdam | Villa Vienna, Vienna

Shell Limestone

versatile, multifunctional, substantial

Each piece of Shell Limestone is unique. The variety of the materials, surfaces and finishes leave a lot of scope for the creativity of all architects and builders.

Sea shell fossils – either whole or in part – are typical for the look and the nature of this stone. The shells not only give the stone its name, but also a dynamic structure. The colouring of Shell Limestone can vary from grey to grey/gold, through to shades of brown. Its bold yet subtle colouring allows combinations with many other materials, like glass, metal or wood.

Shell Limestone is a multifunctional material. It has been used on churches and public buildings, for internal and external designs, on facades or in garden and landscaping projects. Its excellent physical properties and high weather resistance allow it to be considered for use in any application.

Home Silvester, Vienna



Technical Data according to DIN EN	VeroStone® Fossil Smoke	VeroStone® Fossil Ocean Blue	VeroStone® Fossil Smoke Travertin
water absorption	2,3 M.-%	0,25 M.-%	2,3 M.-%
density	2420 kg/m³	2650 kg/m³	2420 kg/m³
flexural strength	5,8 Mpa	8,3 Mpa	5,2 Mpa
modulus of rupture	1154 N	1245 N	1037 N
frost resistance	resistant	resistant	resistant

detailed technical data can be found on the internet: www.verostone.de

Material



DATEV, Nuremberg



Private house, terrace

Surfaces



natural cleft



bushhammered



honed



striated



split face



sawn



tumbled



coarse diamond finish



sandblasted and brushed



© Olaf Mahlstedt



Museum Peter August Bockstiegel, Werther | STO-Zentrale, Stühlingen

Sandstone

ornamental, mineral, formative

Sandstones are sedimentary rocks, whose light earthen colours and natural, slightly rough surfaces give them a timeless beauty. For centuries sandstones have been used as a building material, since processing the stone is fairly easy and leaves room for the creativity of the builder.

Mineral and organic constituents create a variety of colours of the sandstones, ranging from white-grey to yellowish, from brown to reddish. This visual diversity is enhanced by various surface finishes. The possibilities for applications are as varied as the colour shades.

Sandstones were already used for impressive exterior facades as early as the Baroque period and are still a popular choice today. The warm and decorative impact of sandstones will also transform interiors into stylish-elegant or pleasantly comfortable living areas.

Since almost all sandstones are frost-resistant, they are a preferred natural material for landscape architecture and gardening. Cobble stones for driveways, slabs for terraces, garden paths or stairs, and walls clad in sandstone are in perfect harmony with nature.

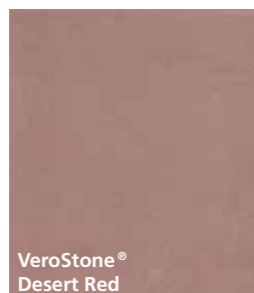
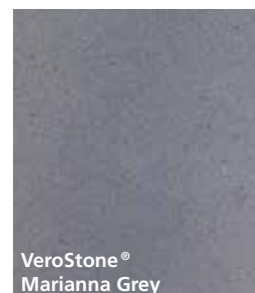


Premier Inn Salford Manchester, UK

Market Place Sabinov, Slovakia



Material



VeroStone®
Marianna Grey

VeroStone®
Desert Red

VeroStone®
Desert Yellow



Bank Korzenna, Poland

Technical Data according to DIN EN	VeroStone® Marianna Grey	VeroStone® Desert Red	VeroStone® Desert Yellow
water absorption	1,12 M.-%	3,5 M.-%	7,84 M.-%
density	2580 kg/m³	2290 kg/m³	2130 kg/m³
flexural strength	13,3 Mpa	8,0 Mpa	6,16 Mpa
modulus of rupture	1500 N	740 N	1117 N
frost resistance	resistant	resistant	resistant

detailed technical data can be found on the internet: www.verostone.de

Surfaces



polished



bushhammered



split face



flamed



flamed and brushed



sawn



stippled



bushhammered



bushhammered

Galeria Baltycka Danzig, Poland



Bank Korzenna, Poland

Impressions

modern, elegant, stylish

Private homes

Natural stones are selected as building materials not only for public projects and by large companies, but also a growing number of private builder-owners choose natural stones for their home.

An exterior façade of natural stone is as robust as it is noble and can, conversely, emphasize the modern character of a building as well as its traditional appearance. With private home-owners, however, natural stone is especially sought-after for the design of the interiors and for gardening and landscaping.



Technology

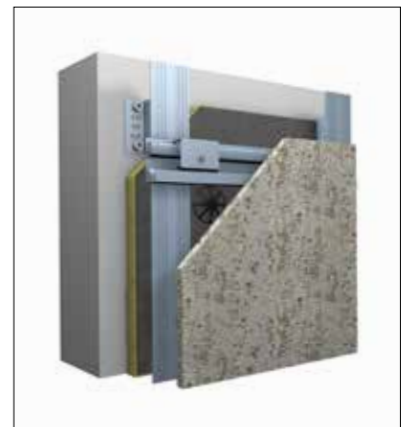
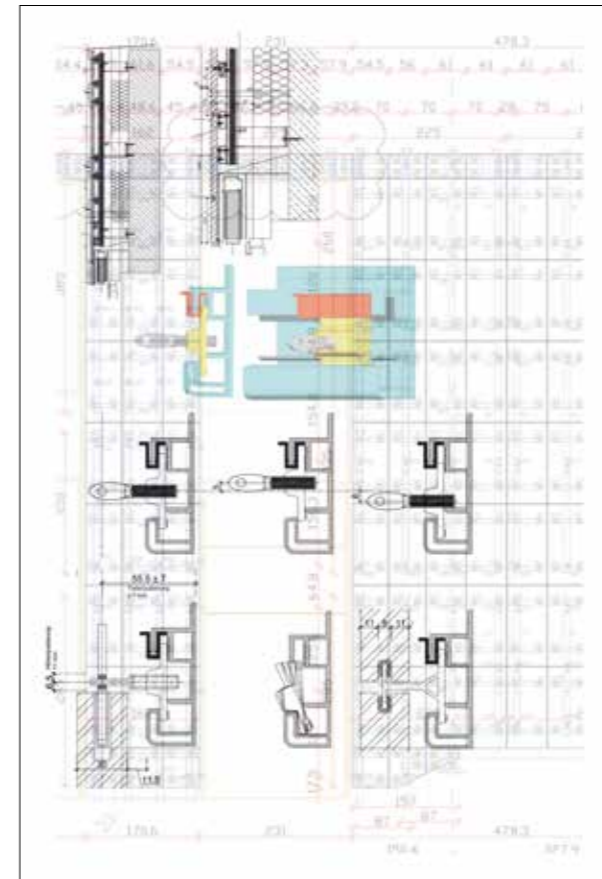
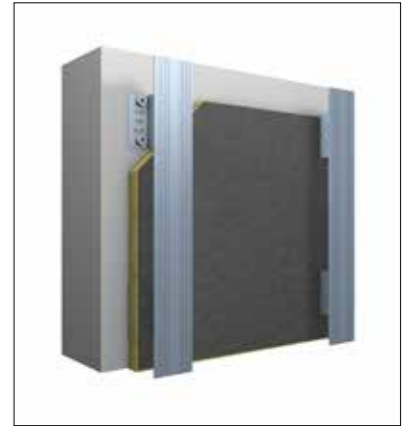
Facade systems

Ventilated natural stone facades are complex constructions which comprise far more than just a supported structure of stone.

In the (German) regulations for energy saving in buildings (EnEv), high demands on thermal insulation are stipulated. As a result the cavity between primary support structure

and the natural stone face invariably becomes wider. VeroStone offers suitable systems which can be individually adapted.

We will find the perfect solution for you, either with mandrel support, groove support, undercut anchors or a combination of solutions to suit your specific project requirements.



VeroStone GmbH

Willibaldstrasse 38
D-85072 Eichstaett
Telephone: +49 (0) 8421 9730-0
Telefax: +49 (0) 8421 9730-30

info@verostone.de
www.verostone.de

famous throughout the world references

VeroStone Jura Limestone and Shell Limestone are being used in numerous projects by renowned architects and project developers.

Argentina
Museo de Arte Latinamericano, Buenos Aires

Australia
Sheraton Hotel, Melbourne

Canada
Escala, Vancouver

Chinook Shopping Mall, Calgary

England
Royal Opera House, London

Boldrewood Campus, Southampton

Byrom Point Student Accommodation, Liverpool

Finland
Kasarmikatu 21, Helsinki

German Embassy, Helsinki

Germany
Berlin-Brandenburg International Airport, Berlin

Berliner Carree, Darmstadt

Campus Westend, Frankfurt/Main

Gerling Quartier, Cologne
Jugendberufsagentur, Bielefeld
Jobcenter Arbeitplus, Bielefeld

Kühne & Nagel, Hamburg

Museum Peter August Böckstiegel, Werther

Turmcarrée Eschenheimer Turm, Frankfurt/Main

U-Bahnhof Brandenburger Tor, Berlin

ZED, Berlin

Israel
Cultural Centre, Rishon Le Zion

Japan
Takasaki City Hall, Takasaki

Horyuji Gallery, Tokyo

Roppongi, Tokyo

Kuwait
Al Hamra Tower, Kuwait City

Netherlands
NoMa House, Amsterdam
Mahlerlaan 1000, Amsterdam

De Zeven Provincien, Amsterdam

New Zealand
Vero Insurance Tower, Auckland

Oman
Al Bustan Palace Hotel, Muscat

Poland
Jeronimo Martins, Warsaw

Russia
British Embassy, Moscow

Saudi Arabia
Golf Corporation Council Center, Riyadh

King Fahad Medical City, Riyadh

Slovakia
Blumental, Bratislava

Sweden
Taeby Centrum, Taeby

Scandic Continental Hotel, Stockholm

Switzerland
Grand Hotel Dolder, Zurich

Sparkasse, Rorschach

Zurich Airport, Zurich

USA
Boston University, Massachusetts

MIT University, Cambridge

MIT University, Massachusetts

The Turner Building, Atlanta

John Wayne Airport, California

Strathmore Concert Hall, Maryland

Rockefeller Center, New York

