



## **VeroStone® Slim**

Slimline and lightweight:  
The natural stone system  
for interiors

Please note that the details, illustrations, general technical information and drawings contained in this brochure are only general proposals and details which merely describe the basic functions schematically. No precise dimensions are included. The applicator/customer is independently responsible for determining the suitability and completeness for the construction project in question. Neighbouring works are only described schematically. All specifications and information must be adjusted or agreed in the light of local conditions and do not constitute work, detail, or installation plans. The technical specifications and product information in the Technical Data Sheets and in system descriptions/certificates must be observed.

# VeroStone® Slim

Natural stone in its lightest form

**Nature relaxes us. It allows us to feel connected to Earth. That's why we are increasingly incorporating natural materials into our rooms. Alongside wood, natural stone has been used extensively for thousands of years – and for many years, it has also been enjoying growing popularity in interior design. A perfect solution is the new VeroStone® Slim thin stone system.**

## **Valuable raw material**

In its most solid forms, natural stone has been used to construct monuments and buildings for thousands of years. Many of these constructions, such as the pyramids of Giza, remain to this day. Yet we must be aware that mining this valuable resource has an impact on the environment and requires a lot of energy to extract, process, and transport it.

## **Design element for interior facades**

The days when buildings were made purely from stone have long since passed. Yet as an architectural design element for facades and interiors, natural stone is highly sought after. As solid stone slabs are generally too heavy for large-format wall coverings – particularly for plasterboard walls used in stud-work, for example –, VeroStone has developed a new, space-saving,

lightweight, and easy-to-install thin stone system: our VeroStone® Slim.

## **VeroStone® Slim – slimline and lightweight system with natural stone**

With a system build-up of approx. 50 mm and system weight of just 20 kg/m<sup>2</sup>, VeroStone® Slim is one of the lightest thin stone systems worldwide.

Just 4-mm-thick, the genuine natural stone is supported by a statically perfectly suited facade carrier board. This is ideal as a carrier for solid, high-quality surfaces made from stone. The VeroStone® Slim complete system has undergone indicative testing and, with a rating of A2-s1,d0, has been classified in the “non-combustible” building material class.



**Layers of stone formed over millions of years, exposed at the VeroStone quarry.**

# Integrated complete system

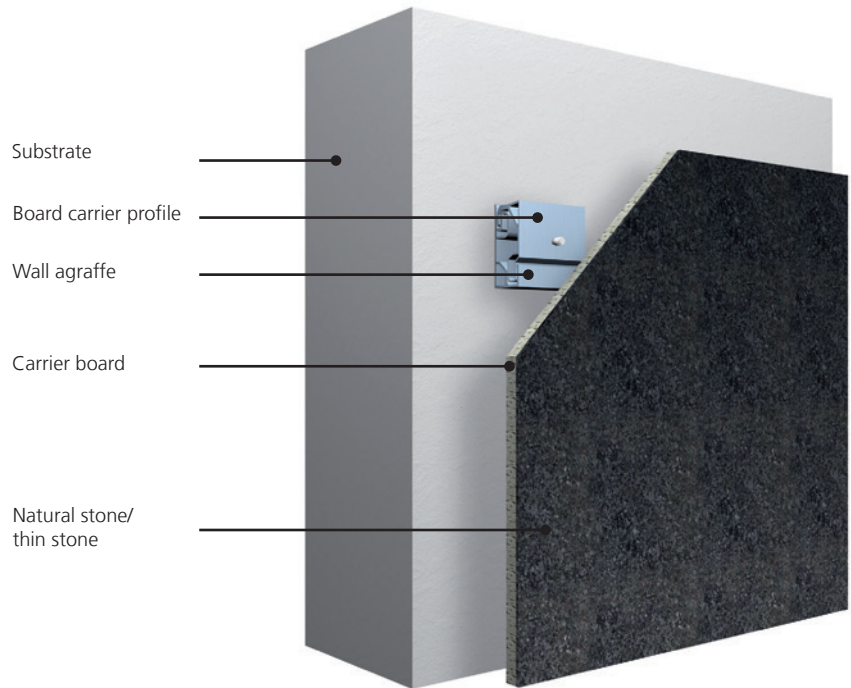
## Thin stone element including fixing system

### VeroStone® Slim

The VeroStone thin stone element is completed with an ingenious fixing system: the board carrier profile, which is screwed directly to the carrier board, is extremely easy to insert into the supplied wall agraffe.

The integrated adjustment screws allow VeroStone® Slim to be perfectly centred.

Moving it along the wall agraffes aligns the element horizontally; the lightweight, easy-to-insert individual elements allow them to be replaced without any hassle.



### Technical data

<b>System weight</b>	Approx. 20 kg/m <sup>2</sup> (weight varies depending on type of natural stone)	<b>Building materials class</b>	A2-s1,d0 *
<b>System build-up</b>	approx. 50 mm	<b>Joints</b>	Closed or open joint
<b>Format</b>	Standard format: 2350 x 1150 mm Sub-formats possible. Prefabricated moulds possible.	<b>Substrates</b>	<ul style="list-style-type: none"> <li>· Drywall</li> <li>· Vertical coring brick</li> <li>· Concrete</li> </ul>
<b>Shortest side length</b>	100 mm	<b>Possible details</b>	<ul style="list-style-type: none"> <li>· External corner</li> <li>· Internal corner</li> <li>· Wall, ceiling, floor connections</li> <li>· Openings</li> <li>· Reveals</li> </ul>
<b>Tolerances</b>	L/W/diagonal: +/- 1 mm Evenness/thickness: +/- 0.5 mm	<b>Special elements</b>	<ul style="list-style-type: none"> <li>· Visible stone edge</li> <li>· Mitre edge</li> <li>· Inspection openings</li> </ul>

\* according to indicative test

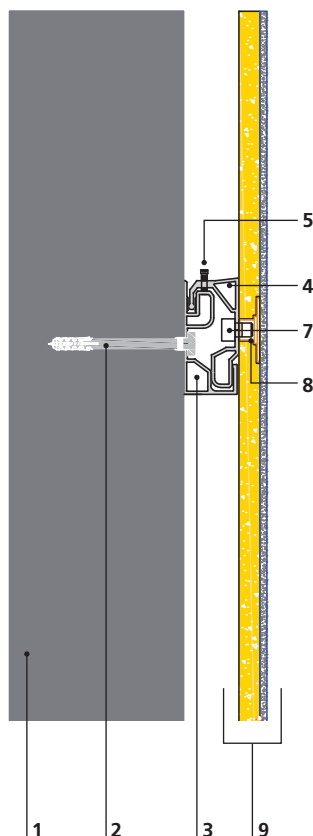
# Technical details

## Perfect thin stone system for interiors

### Your benefits

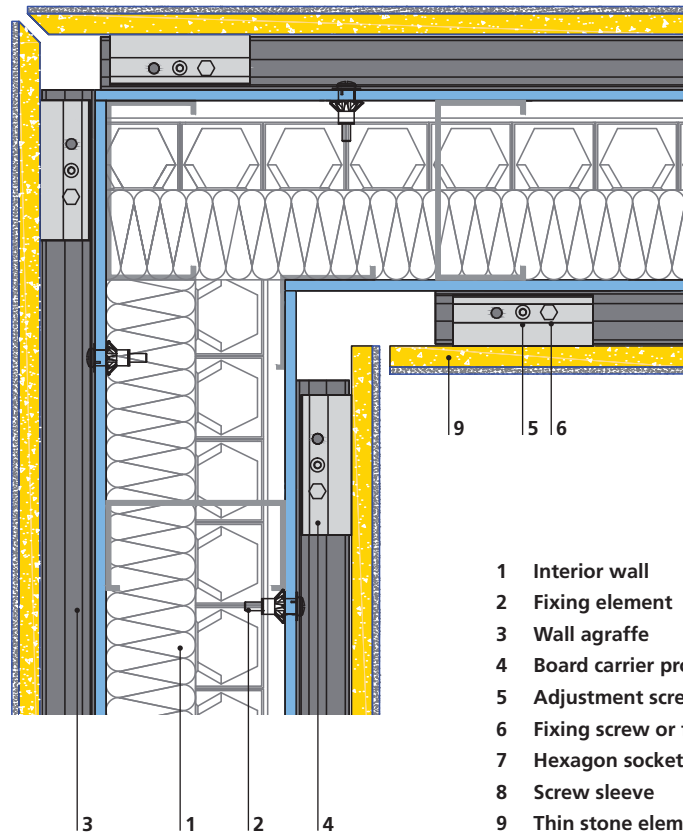
- Slim system build-up – only approx. 50 mm incl. fixing element
- Low system weight – only approx. 20 kg
- New design possibilities in interiors with large-scale formats
- Extremely simple to fix in place thanks to supplied wall agraffe system
- Excellent accessibility
- Resource-efficient natural product

Vertical section

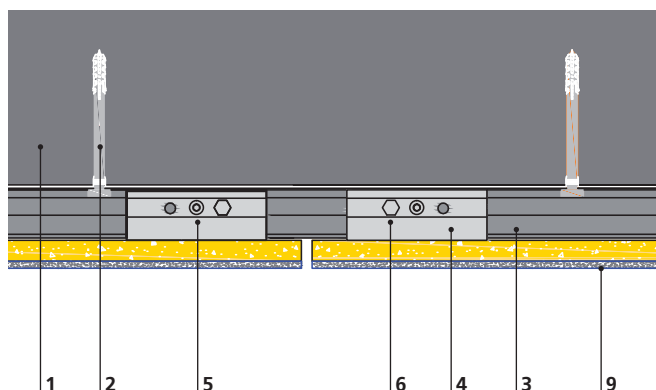


Horizontal section

Internal corner and external corner



Horizontal section





# Wall design examples

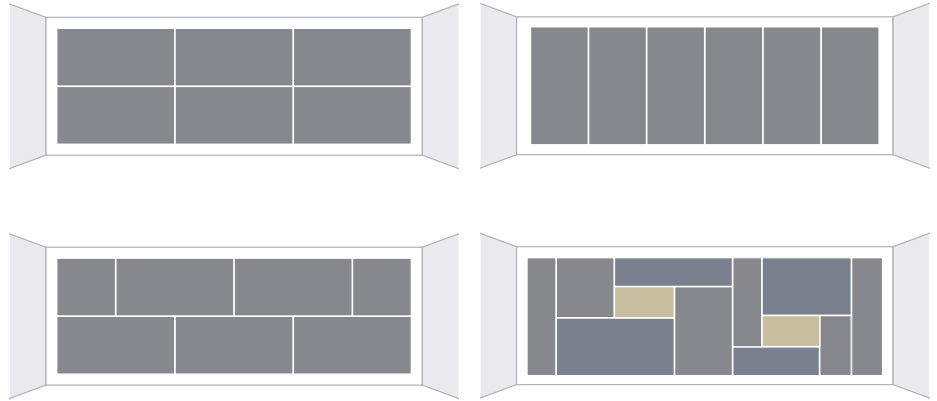
## Expansive appearance for imposing interior walls

### Combinations and attractive patterns

The design of VeroStone® Slim can be varied to suit individual preferences – the size and arrangement of the natural stone elements can be used to alter the appearance of the room as required.

For example, it is possible to use a classic cross joint or opt for a row arrangement – or even to incorporate various formats. Combining different types of stone offers up even more design possibilities.

VeroStone® Slim makes it extremely easy to integrate the expansive design of imposing interiors or facades in courtyards.



Wall-height stone panels (up to 2.40 m) are particularly suitable for designing high walls with a reduced joint pattern.

### New design possibilities with VeroStone® Slim

- Particularly suitable for the large-format cladding of high walls.
- With 2350 x 1150 mm, natural stone walls can now be designed with a significantly reduced joint pattern.
- Other formats are available on request.
- Special elements designed to specifications: for visible stone edges, mitre edges, or inspection openings.



Impressive: imposing rooms with expansive natural stone design.

# Natural stone

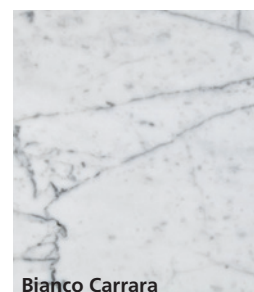
Selected, genuine, combinable

## Attractive stones

The surface of the VeroStone® Slim thin stone element consists of genuine natural stone.

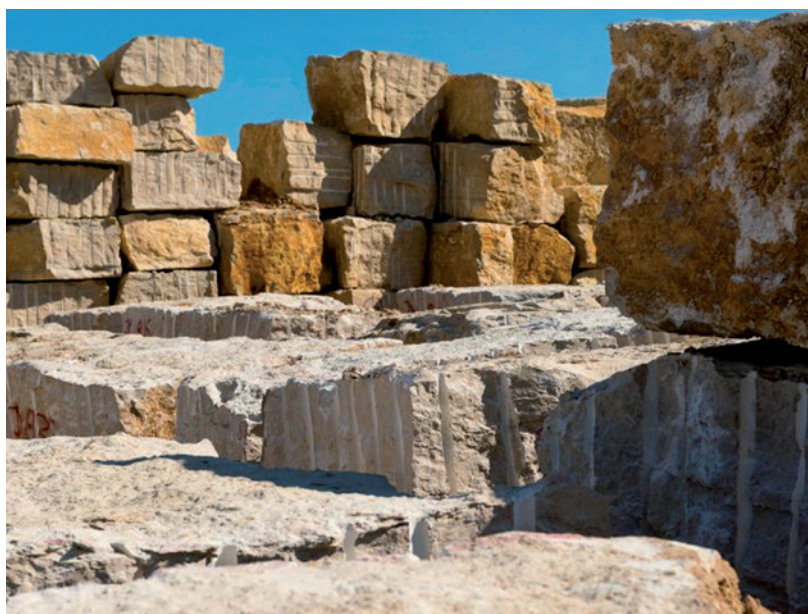
We have selected six attractive types of stone for the VeroStone® Slim standard range for interiors.

The different colour shades and textures provide inspiration for a range of interesting design possibilities and combinations.



## Our services

- Prefabricated panel system
- Natural stone consultation
- Technical system consultation
- Approximate price calculation
- Guidance for tenders
- Liaising with installation experts
- Logistics service



The wafer-thin VeroStone® Slim panels are produced from solid raw blocks in certified production facilities.

## VeroStone GmbH

### Eichstätt factory

(formerly Natursteinindustrie  
Johann Neumeyer & Brigl  
GmbH & Co. KG)  
Willibaldstraße 38  
D-85072 Eichstätt-Blumenberg,  
Germany  
Phone: +49 8421 9730-0  
Fax: +49 8421 9730-30

## VeroStone GmbH

### Kirchheim factory

(formerly HEMM.STONE GmbH)  
Mergentheimer Straße  
D-97268 Kirchheim, Germany

[infoservice.verostone@sto.com](mailto:infoservice.verostone@sto.com)  
[www.vero-stone.com](http://www.vero-stone.com)

## Renowned worldwide

### References

Jura limestone and Shell limestone from VeroStone are used in numerous projects by renowned architecture offices and project developers.

#### Argentina

Museo de Arte Latinoamericano,  
Buenos Aires

#### Australia

Sheraton Hotel, Melbourne

#### Canada

Escala, Vancouver

Chinook Shopping Mall,  
Calgary

#### United Kingdom

Royal Opera House, London

#### Finland

German Embassy, Helsinki

#### Germany

Berlin-Brandenburg  
International Airport

BfA, Bonn

Campus Westend, Frankfurt

Fritz-Thyssen Foundation,  
Cologne

Esprit Headquarter, Ratingen

HafenCity, Hamburg

Hofstatt, Munich

Kühne & Nagel, Hamburg

Brandenburger Tor Underground Station, Berlin

Uni Leipzig, Leipzig

Westfalen Tower, Dortmund

ZED, Berlin

#### Israel

Cultural Centre, Rishon Le Zion

#### Japan

Takasaki City Hall, Takasaki

Hotel Apex Resort, Toya

#### Kuwait

Al Hamra Tower

#### New Zealand

Vero Insurance Tower, Auckland

#### Oman

Al Bustan Palace Hotel

#### Poland

Jeronimo Martins, Warsaw

#### Russia

British Embassy, Moscow

#### Saudi Arabia

Gulf Cooperation Council  
Centre, Riyadh

King Fahad Medical City, Riyadh

#### Spain

Villa Hexal, Majorca

#### Sweden

Grand Hotel Lund, Lund

Royal Palace, Stockholm

Taeby Centrum, Taeby

#### Switzerland

Grand Hotel Dolder, Zurich

Hotel Surley, Surley

Mutual Savings Bank, Rorschach

Villa Ramnosa, Minusio

Villa Willmot, Zurich

Zurich Airport, Zurich

#### USA

Boston University,  
Massachusetts

MIT University, Massachusetts

The Turner Building, Atlanta

John Wayne Airport, California

Strathmore Concert Hall,  
Maryland

Rockefeller Center, New York